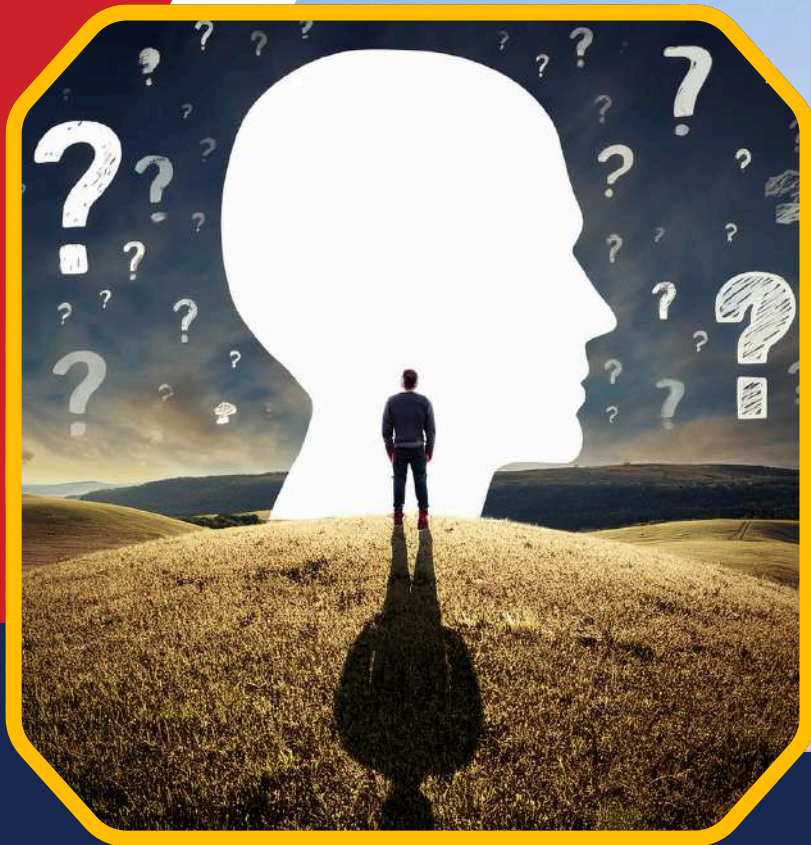




**EAST BRIDGE  
UNIVERSITY**  
PARIS, FRANCE



# Doctor of Philosophy (PhD)



Visit Our Website  
[www.ebu.ac](http://www.ebu.ac)



**EAST BRIDGE  
UNIVERSITY**  
PARIS, FRANCE

## Cultivating Advanced Research Excellence through **Independent Inquiry and Scholarly Contribution.**

The Doctor of Philosophy (PhD) programs at East Bridge University (EBU) are research-intensive doctoral programs designed for scholars, educators, professionals, and practitioners seeking to generate original knowledge and contribute meaningfully to their respective fields.

### **The Academic Value, Rigour, and Credibility of Doctoral Study**

A Doctor of Philosophy (PhD) represents the highest level of academic achievement and scholarly engagement. It is defined not by coursework alone, but by the sustained pursuit of original research, intellectual independence, and a demonstrable contribution to knowledge within a recognised academic discipline.

The rigour of a PhD lies in its emphasis on independent inquiry supported by structured academic oversight. Candidates assume intellectual ownership of their research questions and methodological choices, guided through formal supervision, ethical review processes, and defined research milestones. This balance ensures both academic autonomy and scholarly accountability.

Beyond research expertise, doctoral education cultivates advanced scholarly communication skills, including academic writing at publication level, research dissemination, and the ability to present complex findings to specialist and non-specialist audiences. As such, a PhD signifies not only academic excellence but also leadership in knowledge creation, ethical research practice, and informed decision-making across academic and professional contexts.



Visit Our Website

**[www.ebu.ac](http://www.ebu.ac)**



# philosophy

education

knowledge

beautiful discussion math mental culture classical positive  
conscience emotional history socrates classic intelligence  
art rational an strategy calm paradiam labo itative nology  
doubt socrates classic intellect ancient bookshelf  
platon adult business memory learn library health greece  
enlightenment information decision linguistics school  
inspiration academy mysterious epistemology representation  
study mind word brain investigate experiment definition  
logic activity wisdom university object investigation  
academic message allegory meaning serenity approach  
curiosity metaphysical psychiatry historic relax emotions  
greek

## Key Features of Our **Online PhD** Program



**Research-centred doctoral framework focused on independent and original scholarly inquiry.**



**Expectation of a substantial and original contribution to knowledge through doctoral research.**



**Rigorous engagement with advanced research methodologies and ethical research practice.**



**Structured academic supervision and formal research milestones ensure scholarly quality.**



**Completion and defence of an original doctoral thesis demonstrating intellectual depth and research excellence.**

East Bridge University offers an optional dual PhD pathway, enabling the doctoral award to be complemented by a Ministry-approved partner university in Cambodia.

**\*\*subject to eligibility and academic requirements\*\***





**EAST BRIDGE  
UNIVERSITY**  
PARIS, FRANCE

# Course Structure

PHILOSOPHY

## **Coursework 1: (15 Credits)**

- Foundations of Research

## **Coursework 2: (30 Credits)**

- Research Methods & Statistics

## **Coursework 3: (15 Credits)**

- Writing the Proposal

- **Subject-Matter Seminar/ Reflective Paper (1,000 words): (30 Credits)**

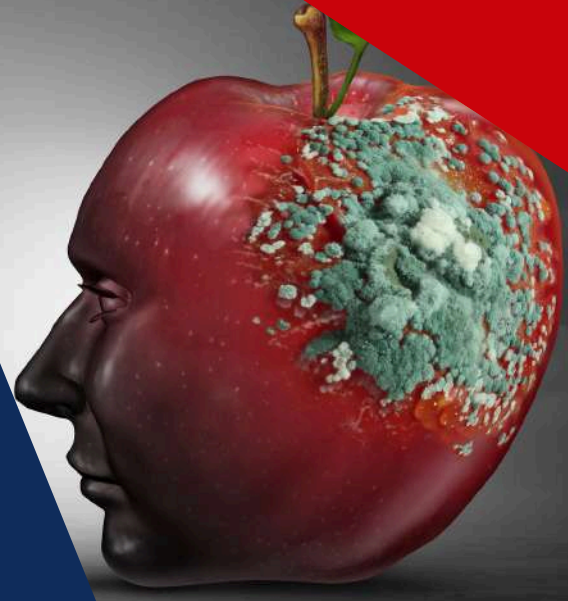
- **Doctoral Thesis (60,000 words): (90 Credits)**

- **Viva Voce (Thesis defence): 60 Credits**



Visit Our Website

[www.ebu.ac](http://www.ebu.ac)



# About East Bridge University (EBU)

East Bridge University is a **global higher education institution** that offers online and affordable degree programs, diplomas, and certified courses to all. Tailored to meet the evolving needs of the 21st century, our programs offer a unique blend of robust theoretical knowledge and practical, real-world exposure. We aim to **empower adult learners and professionals with the best industry-specific courses** that enable them to navigate the dynamic and ever-evolving professional landscape seamlessly. At East Bridge University, we greatly foster critical thinking, analytical skills, and leadership qualities among our students.

East Bridge University is **legally incorporated in Paris** and has received authorisation from the Rector Office of the Paris Academy, which is under the jurisdiction of **the Ministry of National Education**. This prestigious recognition positions EBU as a legitimate, respected, and independent distance learning institution.

## What Makes Our Programs Unique?

-  Find work-life balance with our online, flexible programmes.
-  The course is endorsed by global partners and education bodies.
-  Gain a deeper understanding of the functional disciplines of your profession.
-  Get the opportunity to conduct action-based research work, solving real-world challenges.
-  Enhance your career prospects by earning academic qualifications.
-  Be able to promote positive change and growth in your industry.
-  Become an industry expert and thought leader in your field.
-  Open your doors towards doctorate-level academic pursuits.
-  Address real-world problems with a strong academic understanding.





Association to Advance Collegiate Schools of Business (AACSB)



Continuing Professional Development (CPD)



British Quality Foundation (BQF)



European Association for International Education (EAIE)



European Council of Leading Business Schools (ECLBS)



International Vocational Education and Training Association (IVETA)



Association for Teacher Education in Europe (ATEE)



European Society for Research on the Education of Adults (ESREA)



Accreditation Council for Business Schools and programme (ACBSP)



E Learning Quality Network (ELQN)



European Association of Applied Psychology (EAAP)



OTHM Qualifications

## East Bridge University's Accreditations:



European Agency for Higher Education Advancement (EAHEA)



Education Quality Accreditation Commission (EQAC)



EDU.INT - INTER-GOVERNMENTAL ORGANIZATION



International Association for Quality Assurance in Pre-Tertiary & Higher Education (QAHE)



International Education Accreditation Council (IEAC)



American Accreditation Association



Mercosul Accreditation Agency (MACCA)



Independent Institute for Accreditation, Rating & Certification (IARC)



# PhD Specialisations Offered

## ✔ PhD in Business Administration / Management:

This specialisation focuses on advanced research in business, management, leadership, strategy, and organisational studies. Candidates critically examine contemporary business challenges and contribute original insights to theory, practice, or policy within global and organisational contexts.

## ✔ PhD in Education:

The PhD in Education is designed for scholars and practitioners seeking to advance educational research, pedagogy, leadership, and policy. Research may address teaching and learning, curriculum, assessment, inclusion, educational leadership, or systemic reform across diverse educational settings.

## ✔ PhD in Psychology:

This specialisation emphasises advanced psychological research across cognitive, behavioural, social, and applied psychology domains. Candidates explore human behaviour and mental processes, producing original research that informs both academic knowledge and professional practice.

## Eligibility Criteria

**To be eligible to pursue a PhD, an applicant must meet the following criteria:**

- ✔ A Master's degree in Business Administration, Management, Economics, Finance, or a related field.
- ✔ Demonstrated professional or research experience in business, corporate strategy, or management roles.
- ✔ English proficiency (IELTS 6.0 or equivalent).
- ✔ Strong analytical and digital research skills for online study and data interpretation.



Visit Our Website

[www.ebu.ac](http://www.ebu.ac)



**EAST BRIDGE  
UNIVERSITY**  
PARIS, FRANCE

Advance Knowledge, Lead Scholarly Inquiry,  
and Contribute Research That Shapes the  
Future.

Apply Now to Begin Your **Doctoral Research  
Journey** at East Bridge University.

APPLY NOW



[contact@ebu.ac](mailto:contact@ebu.ac)



+33 1 85 14 96 41



[www.ebu.ac](http://www.ebu.ac)